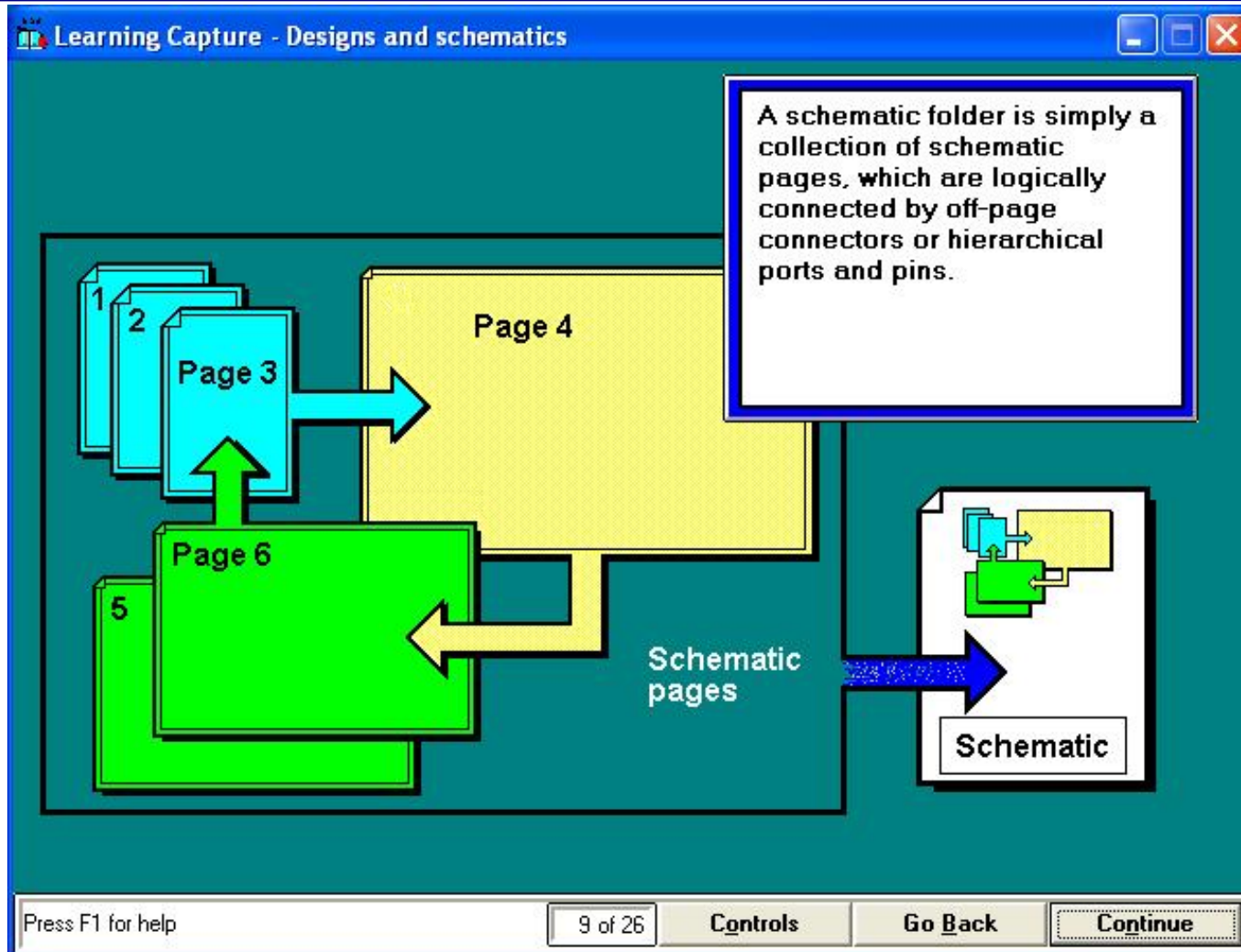
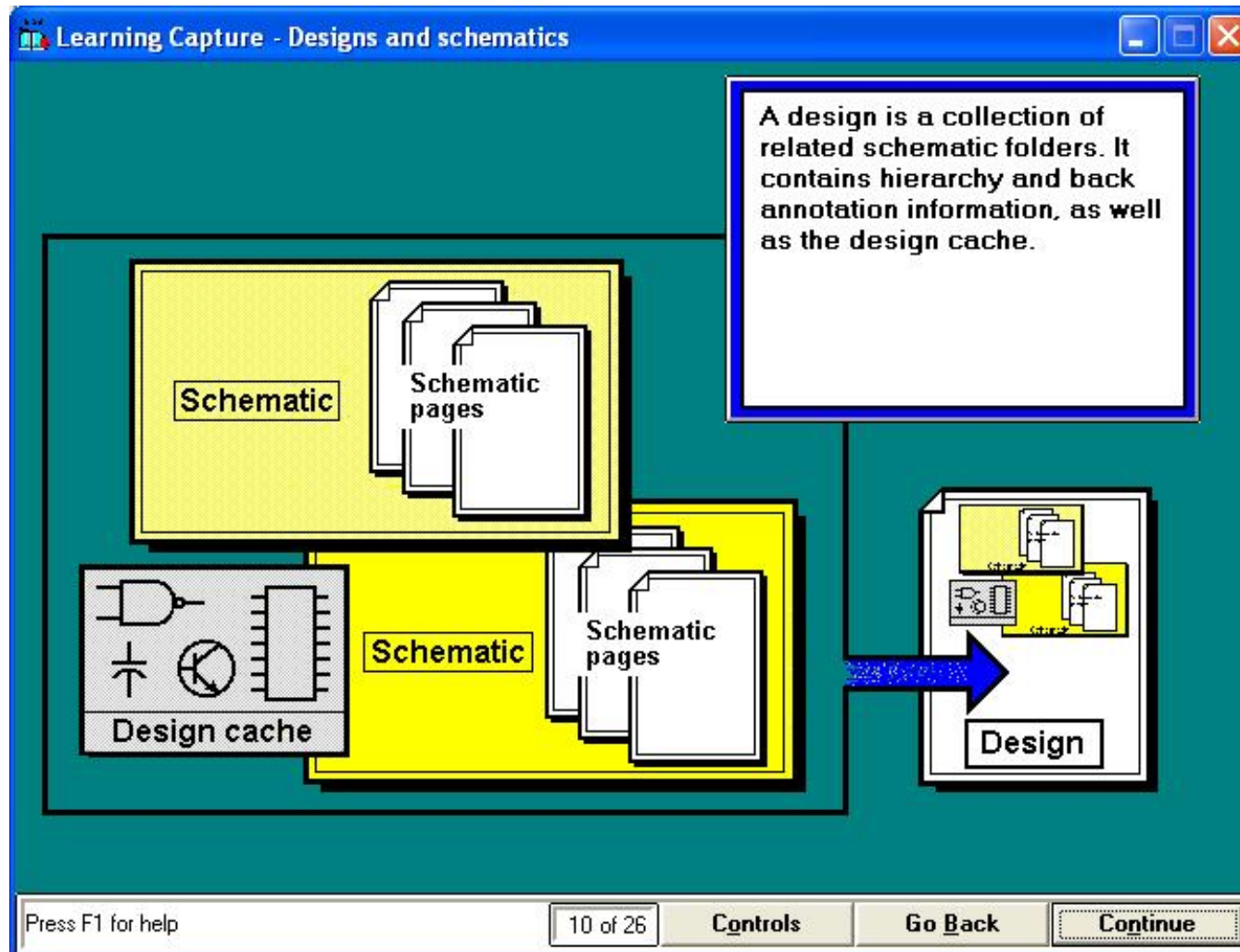


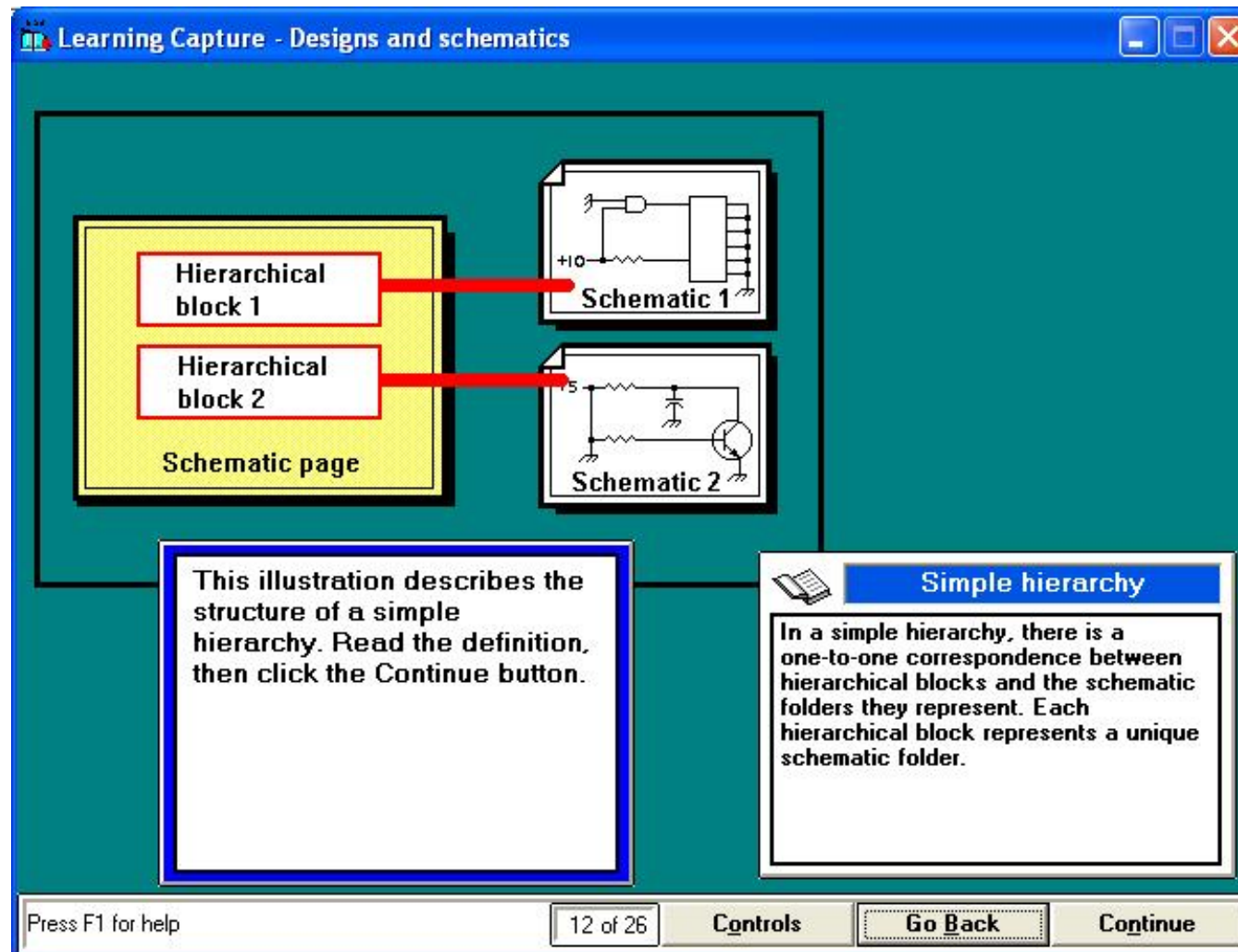
# Состав папки проекта (schematic folder)



# Проект – набор папок



# Проект простой иерархии



# Проект сложной иерархии

The screenshot shows a software window titled "Learning Capture - Designs and schematics". The main content area displays a schematic diagram labeled "Schematic 1" which includes a power source (+10V), a resistor, and a multi-pin component. Two red arrows point from labels "Hierarchical block 1" and "Hierarchical block 2" to specific parts of the schematic. The labels are contained within a yellow box labeled "Schematic page".

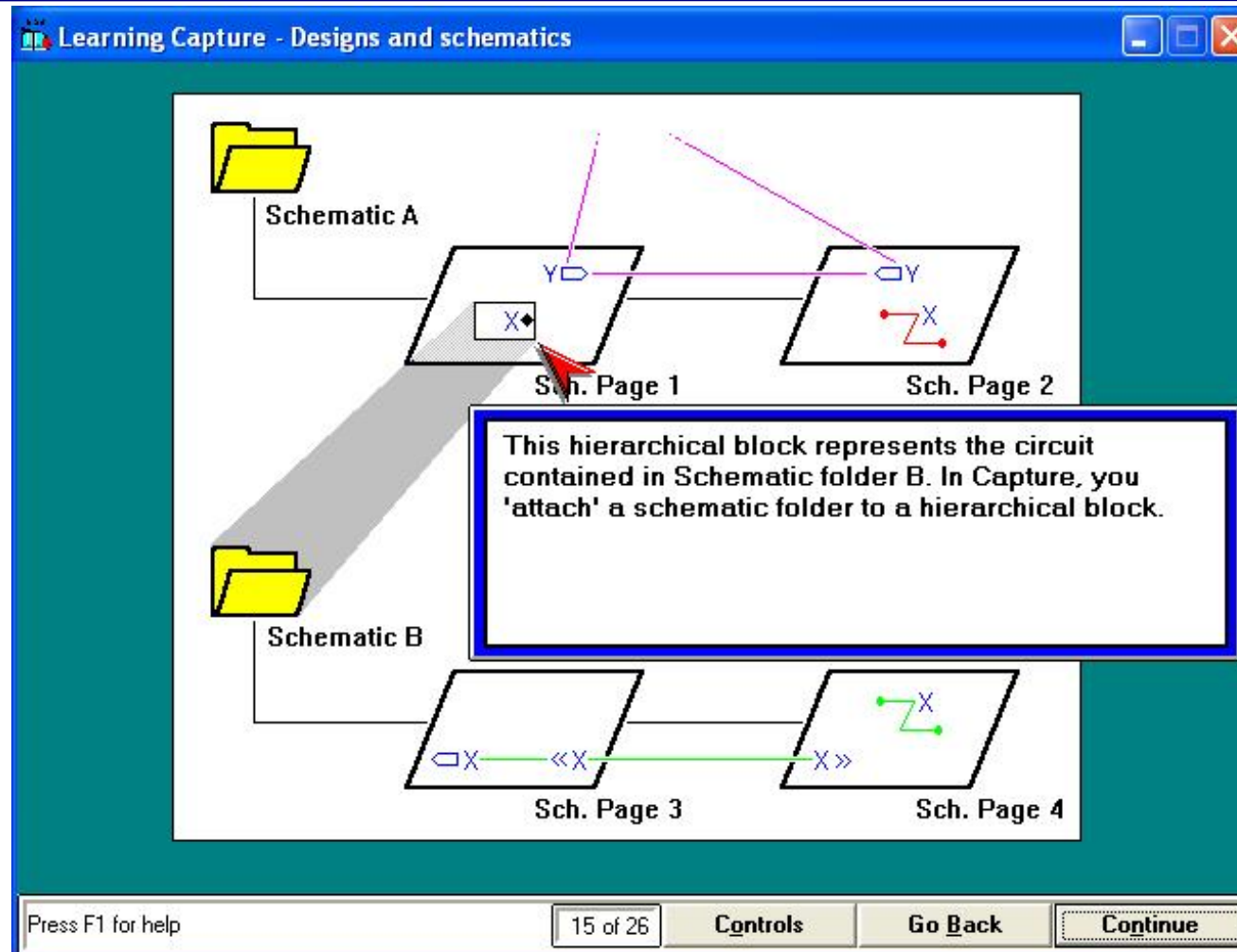
Below the schematic, there are two text boxes:

- A blue-bordered box containing the text: "This illustration describes a complex hierarchy. Read the definition, then click the Continue button."
- A white-bordered box with a blue header "Complex hierarchy" containing the text: "In a complex hierarchy, two or more hierarchical blocks refer to a single schematic folder."

At the bottom of the window, there is a control bar with the following elements from left to right:

- Text: "Press F1 for help"
- Page indicator: "13 of 26"
- Button: "Controls"
- Button: "Go Back"
- Button: "Continue" (highlighted with a dotted border)

# Проект сложной иерархии





# Связность проводников и шин. Межстраничные соединители.

